



WORM GEAR REDUCERS STAINLESS STEEL

WorldWide Electric's Stainless Steel, Heavy-Duty, Right Angle Series (SSHdR) Worm Gear Speed Reducers offer excellent speed reduction and load torque enhancement for applications in corrosive environments. Our new maximum hollow bore output design allows stocking distributors to cover a broader range of varying output shaft size configurations using stainless steel bushing kits to help reduce inventory.



Designed For Corrosive Applications

- Flange Input / Hollow Bore Output Options
- Center Distances 1.75"-3.25"
- Speed Ratios 5:1 to 60:1
- Compatible With 56C, 145TC and 182/4TC Motor Inputs

- **No Oil Surcharge.** Prices reflect complete gearboxes, ready for installation and are pre-filled with food grade lubricant oil (Mobil CIBUS 460 H1).
- **One-Year Warranty.** WorldWide Electric Stainless Steel Right Angle Gear Reducers carry a one-year warranty.
- **Flexible Configuration.** WWE offers a variety of stainless steel bushing kits for each center distance size to support compatibility with a wider range of head shaft sizes. Distributors can now stock fewer reducers while covering more applications.
- **Universal Drop-In.** Easily replaces most other major brands with equivalent dimensional and performance ratings.
- **In Stock Availability** with direct shipping from our distribution centers to your site or to a location of your choice.
- **Contact Us 24 x 7** for sales, application and technical support and service.



DRIVING & CONTROLLING

INDUSTRY

HIGH QUALITY DESIGN

Stainless Steel Construction
304 stainless steel housings, covers, and flanges withstand harsh environments providing corrosion resistance and longer operating life.

Protected
RoHS plastic covers supplied with unit block mounting holes to help prevent bacteria buildup in crevices.

Sealed
Internal bladder functions as a breather and effectively dispels heat, but also prevents leaking or moisture / particle entrapment caused by traditional open air breather plugs.

Efficient
CuSn12Ni2 bronze-alloy worm wheel with high efficiency gear tooth configuration helps to reduce friction coefficients and internal heat.

Ready to Use
Pre-filled with Mobil CIBUS 460 H1 food grade lubricant.

Protection
Double-lipped VITON oil seals (at output) are more durable and more resistant to chemical corrosion.

Polished
Surfaces are polished smooth and free of unnecessary ledges on surface edges to improve cleanability and to prevent organism growth on surfaces.

Robust
15CrMo4 NEMA quill input with carburizing heat treatment provides a robust and rigid hardness for better wear-out resistance.

Flange O-Ring
O-ring on input flange helps to prevent moisture and dust intrusion.

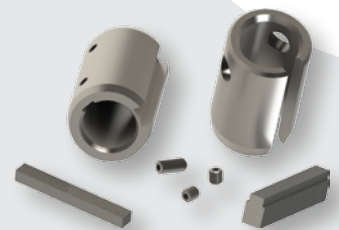
RELIABLE OPERATION

ECONOMIC & AVAILABLE

HOW TO ORDER ...

Easy to understand model numbers make selection intuitive, with center distance, speed ratio, output style, applicable motor compatibility and maximum hollow bore size clearly visible in the model number. Stainless Steel HdR reducers will be offered in only the maximum size output bore. Stainless steel bushing kits are offered to allow for smaller head shaft size configurations.

	5:1				
	10:1				
	15:1				
1.75"	20:1			1.0	- 1"
2.06"	30:1			1.716	- 1-7/16"
2.37"	40:1		56C	1.716	- 1-7/16"
2.62"	50:1		145TC	1.1516	- 1-15/16"
3.25"	60:1	H	182/4TC	2.316	- 2-3/16"
C.D.	Ratio	Output Style	Motor Frame	Max. Bore Size	C.D.



Stainless Steel Bushing Kits

- Bushing O.D.'s from 1" to 2 -3/16"
- Bushing I.D.'s from 5/8" to 2"

SSHdR 206 10/1 H 56C 1.716

Example Model Number : SSHdR206-10/1-H-56C-1.716